

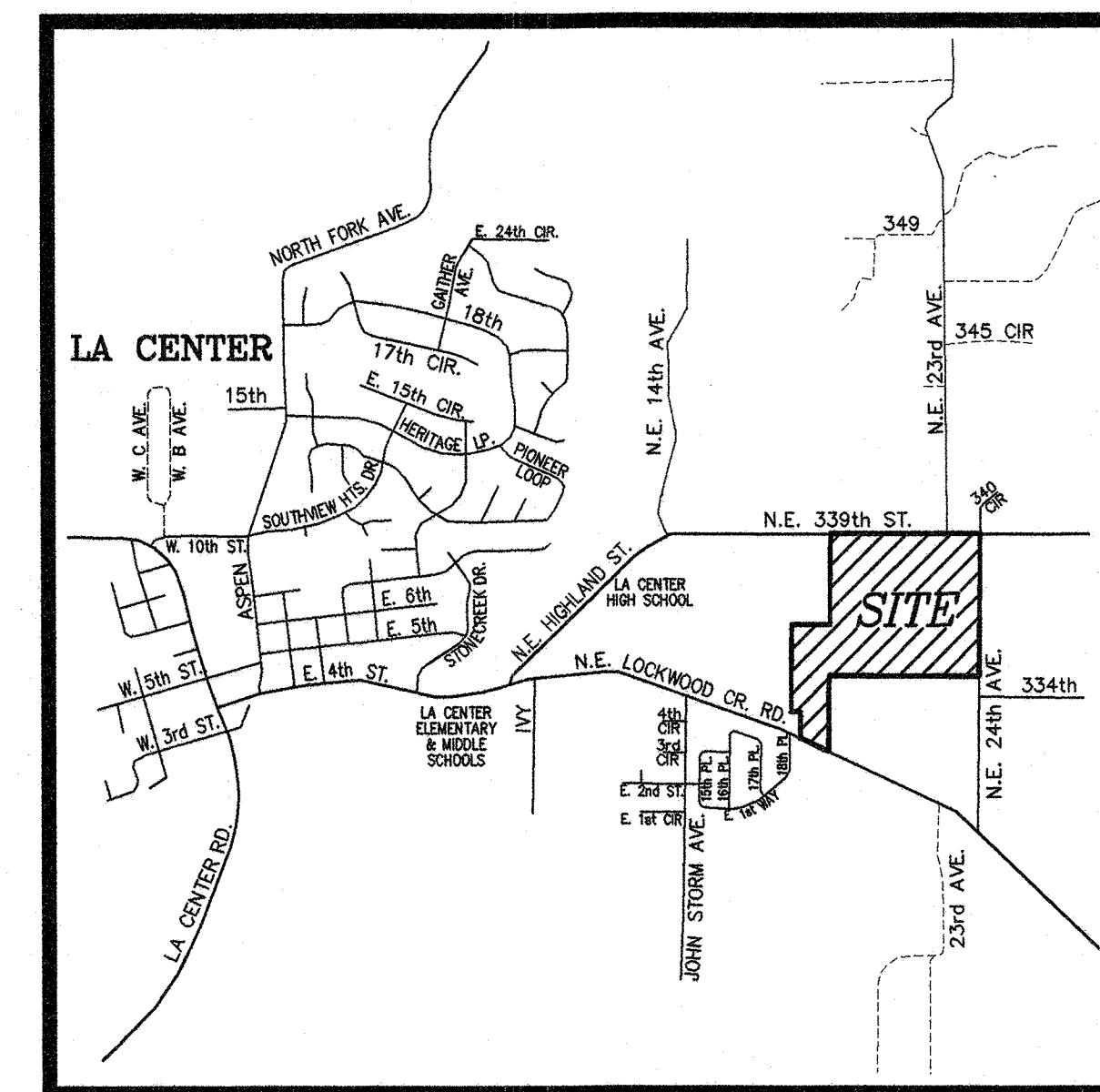


THE WOLFE GROUP, L.L.C.
 Land Planning, Consulting
 & Civil Engineering
 2401 W. Main Street, Suite 210
 Battle Ground, WA 98604
 (360) 687-2899

SUNRISE TERRACE
 A Residential Subdivision in the N.E.
 1/4 of Section 2 T.4N., R.1E., W.M. in
 the City of La Center, Clark County, WA

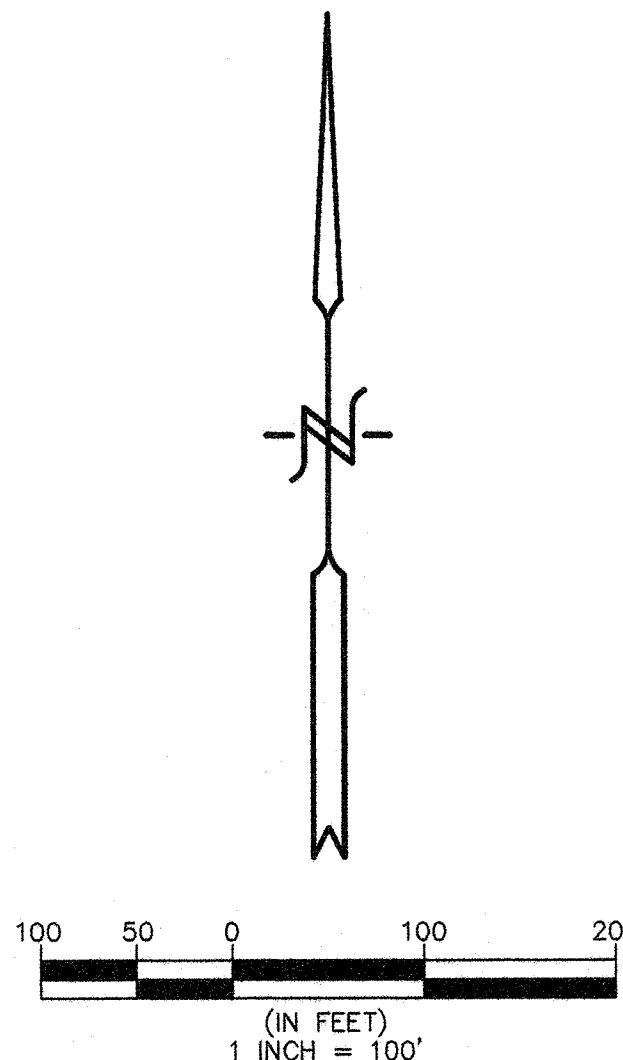
**PRELIMINARY
 STORMWATER PLAN**

JOB #: 15-05
 DESIGNED:
 JEW
 DRAWN:
 JEW
 APPROVED:
 JEW
 DATE:
 JULY 2015
 SCALE:
 HORIZ.: 1" = 100'
 VERT.: N/A
 SHEET



VICINITY MAP

APPLICANT:
RK LAND DEVELOPMENT
 1520 S.W. EATON BLVD.
 BATTLE GROUND, WA 98604
 PHONE: (360) 608-3991



LIVE STORAGE FLOOR EL.=178.00'
 LIVE STORAGE FLOOR AREA=40,350 SQ. FT.
 LIVE PEAK STAGE EL.=181.0'

WETPOND FLOOR EL.=174.00'
 TOTAL FLOOR AREA=25,970 SQ. FT.
 CELL 1:
 STORAGE FLOOR AREA=7,770 SQ. FT.
 STORAGE FLOOR EL.=174.10'
 STORAGE VOL.=49,700 CU. FT.
 SEDIMENT STORAGE FLOOR EL.=173.0'

CELL 2:
 FLOOR AREA=18,200 SQ. FT.
 FLOOR EL.=174.00'
 STORAGE VOL.=98,880 CU. FT.

WETPOND FLOOR EL.=144.00'
 FLOOR AREA=2,570 SQ. FT.
 STORAGE FLOOR AREA=2,570 SQ. FT.
 STORAGE FLOOR EL.=144.00'
 STORAGE VOL.=13,900 CU. FT.
 SEDIMENT STORAGE FLOOR EL.=143.0'

NOTES:
 ALL STORMWATER RUNOFF GENERATED FROM THE PROJECT SITE
 WILL BE TREATED AND DETAINED ON THE SITE.
 STORMWATER RUNOFF FROM THE PROPOSED DEVELOPMENT
 WILL BE TREATED WITH THE USE OF WETPONDS PRIOR TO
 RELEASE FROM THE SITE.
 STORMWATER RUNOFF FROM THE PROPOSED DEVELOPMENT
 WILL BE DETAINED WITH THE USE OF A SURFACE DETENTION
 POND TO LIMIT THE PEAK DISCHARGE RATES LEAVING THE SITE.
 ALL ROOF DRAINAGE WILL BE DIRECTED TO THE STREET OR
 DIRECTLY TO THE STORM PIPE SYSTEM.