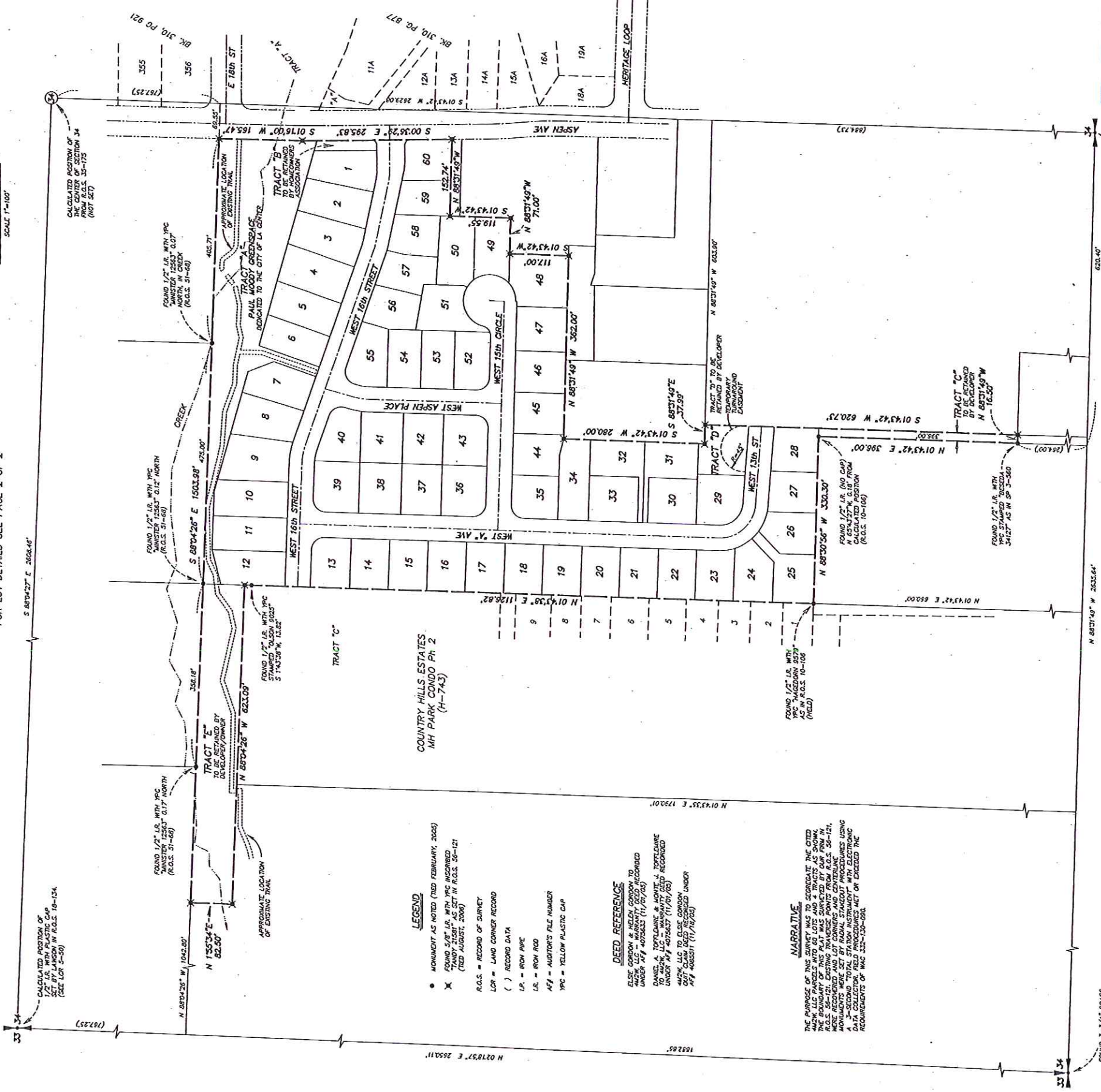


GORDON CREST

A SUBDIVISION IN THE NW 1/4 of the SW 1/4, the NE 1/4 of the SW 1/4 and the SE 1/4 of the SW 1/4 of SECTION 34, T5N, R1E, W.M. CITY OF LA CENTER, CLARK COUNTY, WA.
FOR LOT DETAILS SEE PAGE 2 OF 2



LEGEND
● MONUMENT AS NOTED (TIED FEBRUARY, 2005)
✕ FOUND 5/8\"/>

DEED REFERENCE
ELSE GORDON & HELEN GORDON TO MARY ANN GORDON, L.C. - WASHINGTON FIELD RECORDED UNDER #74 4875637 (11/21/03)
MAY, LLC TO ELISE GORDON UNDER #74 4883311 (11/18/20)

NARRATIVE
THE PURPOSE OF THIS SURVEY WAS TO CORRECT THE GIVE MARK L.L.C. PARCELS INTO 60 LOTS AND 4 TRACTS AS SHOWN ON THIS PLAT. THIS PLAT WAS SURVEYED BY OUR FIRM IN ACCORDANCE WITH THE REQUIREMENTS OF WAC 35-121. MONUMENTS WERE SET BY RADIAL STAKEOUT PROCEDURES USING AN AUTOMATIC LEVEL AND TOTAL STATION. ALL MEASUREMENTS WERE CHECKED BY A SECOND SURVEYOR. THE DATA COLLECTOR, FIELD PROCEDURES MET OR EXCEEDED THE REQUIREMENTS OF WAC 35-120-090.

LA CENTER MAYOR: Gary Stind 4/19/07 DATE
CITY ENGINEER: John Trankle, PE 4/19/07 DATE
LA CENTER DIRECTOR OF PUBLIC WORKS: Jeffrey V. Venzel 4-18-07 DATE
LA CENTER FINANCE DIRECTOR / CITY CLERK: Leanne Steas 4-19-07 DATE

COUNTY ASSESSOR: John Trankle, PE CLARK COUNTY ASSESSOR
AUDITOR'S CERTIFICATE: FILED FOR RECORD THIS 20th DAY OF April 2007 IN BOOK 311 OF PLATS AT PAGE 492. AUDITOR'S FILE NO. 4313784. Shirley K. Venzel CLARK COUNTY AUDITOR
UTILITY AND SIDEWALK EASEMENT: AN EASEMENT IS HEREBY RECEIVED UNDER AND UPON THE EXTERIOR SIX (6) FEET FROM BOUNDARY LINES OF ALL LOTS FOR THE PURPOSE OF INSTALLING, MAINTAINING, REPAIRING, REPLACING, AND OPERATING WATER, GAS, TELEPHONE, WIRE AND SANITARY SERVICE. ALSO A SIDEWALK EASEMENT IS HEREBY RECEIVED UNDER AND UPON THE EXTERIOR SIX (6) FEET ALONG THE FRONT BOUNDARY LINES OF ALL LOTS ADJACENT TO PUBLIC STREETS.

LAND SURVEYOR'S CERTIFICATE
I HEREBY CERTIFY THAT THIS PLAT AS SHOWN IS A TRUE RETURN FROM THE FIELD AND THAT THE DELINEATION IS CORRECT TO THE BEST OF MY KNOWLEDGE AND BELIEF.
Paul P. Tandy 4/19/07 DATE
DRAWN BY: CC-BPT
CHECKED BY: RDS
JOB NO. 05-026
SCALE: 1\"/>



HAGEDORN, INC.
1924 Broadway Vancouver, Wa. 98663
Ph: (360) 696-4428 (305) 263-6778
Dwg: 05-026-01
PAGE 1 OF 2

RECEIVED
15 JAN 2007
CITY OF LA CENTER

