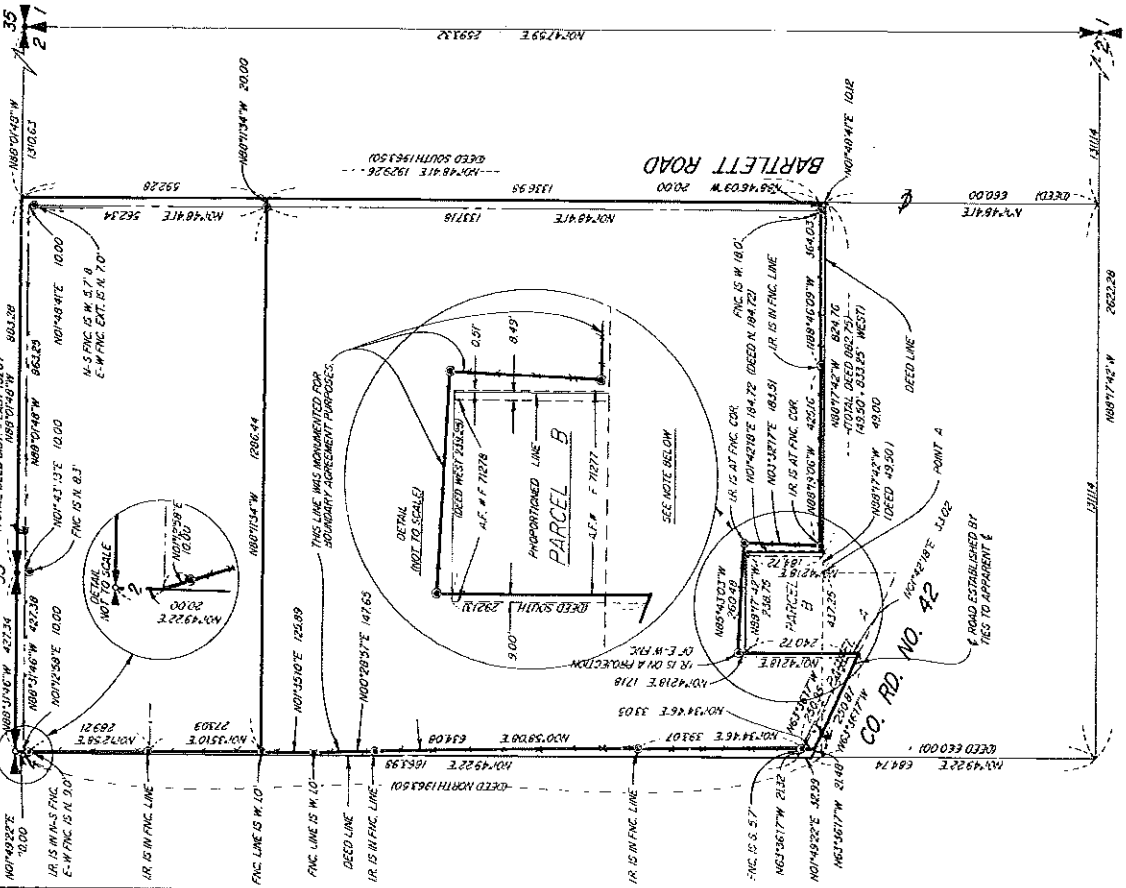


RECORD OF SURVEY
IN THE
W 1/2 NE 1/4
SEC. 2, T4N, R1E, W.M.
CLARK COUNTY, WA

COUNTY RD. NO. 41



DETAIL
SCALE: 1"=1000'

1. FIND BOX MARK W/BRASS CAP W/ "Y" NOTE: IN JULY 1974 WE TIED A STONE TO THE CORNER WHICH WAS LATER MONUMENTED BY THE COUNTY. THE STONE WAS APPROX. E. 0.40' OF THE BRASS CAP. SEE L.C.R. REC. IN BK. 2, PG. 66.

2. FIND CONC. MARK W/BRASS CAP W/ "Y" SEE L.C.R. REC. IN BK. 4, PG. 128.

3. FIND CONC. MARK W/BRASS CAP W/ "Y" SET BY W/PLASTIC CAP SET BY MASTER B GLASSER IN 1/4 COR. TO NW COR. OF SEC. WHICH IS APPROX. SAME AS HAGEDORN 17-239 - 2390'.

4. FIND CONC. MARK W/BRASS CAP W/ "Y" SET BY W/PLASTIC CAP SET BY MASTER B GLASSER IN 1/4 COR. TO NW COR. OF SEC. WHICH IS APPROX. SAME AS HAGEDORN 17-239 - 2390'.

5. FIND CONC. MARK W/BRASS CAP W/ "Y" SET BY W/PLASTIC CAP SET BY MASTER B GLASSER IN 1/4 COR. TO NW COR. OF SEC. WHICH IS APPROX. SAME AS HAGEDORN 17-239 - 2390'.

6. FIND CONC. MARK W/BRASS CAP W/ "Y" SET BY W/PLASTIC CAP SET BY MASTER B GLASSER IN 1/4 COR. TO NW COR. OF SEC. WHICH IS APPROX. SAME AS HAGEDORN 17-239 - 2390'.

7. FIND CONC. MARK W/BRASS CAP W/ "Y" SET BY W/PLASTIC CAP SET BY MASTER B GLASSER IN 1/4 COR. TO NW COR. OF SEC. WHICH IS APPROX. SAME AS HAGEDORN 17-239 - 2390'.

8. FIND CONC. MARK W/BRASS CAP W/ "Y" SET BY W/PLASTIC CAP SET BY MASTER B GLASSER IN 1/4 COR. TO NW COR. OF SEC. WHICH IS APPROX. SAME AS HAGEDORN 17-239 - 2390'.

9. FIND CONC. MARK W/BRASS CAP W/ "Y" SET BY W/PLASTIC CAP SET BY MASTER B GLASSER IN 1/4 COR. TO NW COR. OF SEC. WHICH IS APPROX. SAME AS HAGEDORN 17-239 - 2390'.

10. FIND CONC. MARK W/BRASS CAP W/ "Y" SET BY W/PLASTIC CAP SET BY MASTER B GLASSER IN 1/4 COR. TO NW COR. OF SEC. WHICH IS APPROX. SAME AS HAGEDORN 17-239 - 2390'.

11. FIND CONC. MARK W/BRASS CAP W/ "Y" SET BY W/PLASTIC CAP SET BY MASTER B GLASSER IN 1/4 COR. TO NW COR. OF SEC. WHICH IS APPROX. SAME AS HAGEDORN 17-239 - 2390'.

12. FIND CONC. MARK W/BRASS CAP W/ "Y" SET BY W/PLASTIC CAP SET BY MASTER B GLASSER IN 1/4 COR. TO NW COR. OF SEC. WHICH IS APPROX. SAME AS HAGEDORN 17-239 - 2390'.

13. FIND CONC. MARK W/BRASS CAP W/ "Y" SET BY W/PLASTIC CAP SET BY MASTER B GLASSER IN 1/4 COR. TO NW COR. OF SEC. WHICH IS APPROX. SAME AS HAGEDORN 17-239 - 2390'.

14. FIND CONC. MARK W/BRASS CAP W/ "Y" SET BY W/PLASTIC CAP SET BY MASTER B GLASSER IN 1/4 COR. TO NW COR. OF SEC. WHICH IS APPROX. SAME AS HAGEDORN 17-239 - 2390'.

15. FIND CONC. MARK W/BRASS CAP W/ "Y" SET BY W/PLASTIC CAP SET BY MASTER B GLASSER IN 1/4 COR. TO NW COR. OF SEC. WHICH IS APPROX. SAME AS HAGEDORN 17-239 - 2390'.

16. FIND CONC. MARK W/BRASS CAP W/ "Y" SET BY W/PLASTIC CAP SET BY MASTER B GLASSER IN 1/4 COR. TO NW COR. OF SEC. WHICH IS APPROX. SAME AS HAGEDORN 17-239 - 2390'.

17. FIND CONC. MARK W/BRASS CAP W/ "Y" SET BY W/PLASTIC CAP SET BY MASTER B GLASSER IN 1/4 COR. TO NW COR. OF SEC. WHICH IS APPROX. SAME AS HAGEDORN 17-239 - 2390'.

18. FIND CONC. MARK W/BRASS CAP W/ "Y" SET BY W/PLASTIC CAP SET BY MASTER B GLASSER IN 1/4 COR. TO NW COR. OF SEC. WHICH IS APPROX. SAME AS HAGEDORN 17-239 - 2390'.



SURVEYOR'S CERTIFICATE
This map correctly represents a survey made by me or under my direction in accordance with the requirements of the Surveying Act at the request of
JOHN ANDERSON
19_90
11_30

AUDITOR'S CERTIFICATE
I have audited the account of JOHN ANDERSON, Surveyor, in Book 24 of Surveys at page 19, 90, at 2, 1, 2, P. M. at the request of
JAMES OLSON
11_30
11_30
Deputy County Auditor

PROCEDURE:
FIELD TRIANGLES WERE WITH A WILD 12000 FT 3 A WILD DIAL COM AND ADJUSTED BY COMPASS RULE.

SURVEY REFERENCES:
SURVEY BY OLSON/ENGR. 12-11 REC. JULY 1974
UNRECORDED SURVEY BY W.A. SCHMIDT 17-153 REC. SEPT. 1977
SURVEY BY HAGEDORN 17-153 REC. SEPT. 1977
SURVEY BY HAGEDORN 05-071 REC. AUG. 1982
SURVEY BY WINSTON B. GLASSER 12-129 REC. FEB. 1997

NOTE:
THESE AMBIGUITIES WERE CREATED WHEN CURTIS ANDERSON DEEDED POINT E. ANDERSON (A.P. # 71270) AND C. EDWARD ANDERSON (A.P. # 71271) PARCELS OF PROPERTY ON DECEMBER 9, 1946. THE TWO DEEDS DON'T MATCH IN EASTING WHICH RESULTS IN A 3.00' OVERLAP. CURTIS ANDERSON ADJACENT PARCEL # 1 BY DEED A.P. # 71270 IN SEPTEMBER 1939. C. EDWARD ANDERSON'S EAST LINE (A.P. # 71271) MATCHES THE EAST LINE OF HIS ADJACENT PARCEL # 2. THEREFORE WE HELD C. EDWARD ANDERSON'S DEED FOR THE WEST LINE OF PARCEL # 1 AND CURTIS ANDERSON'S DEED FOR PARCEL # 2 TO DETERMINE THE EAST LINE OF PARCEL # 1.

RECORD REFERENCE:
COMPTON, CURTIS ANDERSON GRANTEE, POINT E. ANDERSON DATE: DECEMBER 9, 1946
AUDITOR'S FILE NO.: F 71276

OLSON LAND SURVEYORS ENGINEERS
SCALE 1"=200'
DRAWN BY: RRB
11119 014 W.A.Y.
VANCOUVER, WA 98660
206.269.1365
DATE 10/30 SHEET 1 OF 1

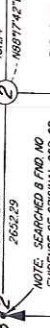
RECORD OF SURVEY
IN THE
NE 1/4
SEC. 2, T4N, R1E, W1M.
CLARK COUNTY, WA



SCALE: 1"=1000'

DEED REFERENCES:

- FND MON. AS DESCRIBED DURING PREVIOUS SURVEY (20/24) REC. NOV. 1990
- SET 1/2" X 3/4" IRON ROD WITH PLASTIC CAP (OLSON #0020) DURING PREVIOUS SURVEY (20/24) REC. NOV. 1990
- SET 1/2" X 3/4" IRON ROD WITH PLASTIC CAP (OLSON #0020) DURING THIS SURVEY
- FND. CONC. MON. W/ BRASS CAP W/ "X" MARKS AS STAKES UNRECORDED BY THE COUNTY. THE POSITION OF THE STONE IS APPROX. E. 0.40' OF THE BRASS CAP. SEE L.C.R. REC. IN BK. 2, PG. 66.
- DEED REFERENCES: GRANTOR: KENT E. ANDERSON GRANTEE: MARY AND SIMONE EWING DATE: MAY 21, 1996 ADD. FILE # 960202007 GRANTOR: KENT E. ANDERSON GRANTEE: IRA AND THEMIS NATION DATE: MAY 21, 1996 ADD. FILE # 960202008



BASES OF BEARINGS CALCULATED BEARING FROM ME. COR. OF SEC. 2 TO THE SEC. COR. OF SEC. 2 FROM HAGEDORN SURVEY (7/153)

- DEED REFERENCES (CONT.): GRANTOR: KENT E. ANDERSON GRANTEE: VINCENT AND PATRICK REED DATE: FEB. 1, 1996 ADD. FILE # 960201005 (REAL ESTATE CONTRACT)
- GRANTOR: KENT E. ANDERSON GRANTEE: JAMES R. HANNOON III DATE: MAY 21, 1996 ADD. FILE # 960202009

DEED REFERENCES (CONT.): GRANTOR: CURTIS ANDERSON GRANTEE: KENT E. ANDERSON DATE: FEB. 1, 1996 AUDITOR'S FILE NO. F. 71278

DEED REFERENCES (CONT.): GRANTOR: CURTIS ANDERSON GRANTEE: KENT E. ANDERSON DATE: FEB. 1, 1996 AUDITOR'S FILE NO. F. 71278

DEED REFERENCES (CONT.): GRANTOR: CURTIS ANDERSON GRANTEE: KENT E. ANDERSON DATE: FEB. 1, 1996 AUDITOR'S FILE NO. F. 71278

DEED REFERENCES (CONT.): GRANTOR: CURTIS ANDERSON GRANTEE: KENT E. ANDERSON DATE: FEB. 1, 1996 AUDITOR'S FILE NO. F. 71278

DEED REFERENCES (CONT.): GRANTOR: CURTIS ANDERSON GRANTEE: KENT E. ANDERSON DATE: FEB. 1, 1996 AUDITOR'S FILE NO. F. 71278

DEED REFERENCES (CONT.): GRANTOR: CURTIS ANDERSON GRANTEE: KENT E. ANDERSON DATE: FEB. 1, 1996 AUDITOR'S FILE NO. F. 71278

DEED REFERENCES (CONT.): GRANTOR: CURTIS ANDERSON GRANTEE: KENT E. ANDERSON DATE: FEB. 1, 1996 AUDITOR'S FILE NO. F. 71278

DEED REFERENCES (CONT.): GRANTOR: CURTIS ANDERSON GRANTEE: KENT E. ANDERSON DATE: FEB. 1, 1996 AUDITOR'S FILE NO. F. 71278

DEED REFERENCES (CONT.): GRANTOR: CURTIS ANDERSON GRANTEE: KENT E. ANDERSON DATE: FEB. 1, 1996 AUDITOR'S FILE NO. F. 71278

DEED REFERENCES (CONT.): GRANTOR: CURTIS ANDERSON GRANTEE: KENT E. ANDERSON DATE: FEB. 1, 1996 AUDITOR'S FILE NO. F. 71278

DEED REFERENCES (CONT.): GRANTOR: CURTIS ANDERSON GRANTEE: KENT E. ANDERSON DATE: FEB. 1, 1996 AUDITOR'S FILE NO. F. 71278

DEED REFERENCES (CONT.): GRANTOR: CURTIS ANDERSON GRANTEE: KENT E. ANDERSON DATE: FEB. 1, 1996 AUDITOR'S FILE NO. F. 71278

THIS LINE WAS MONUMENTED FOR BOUNDARY AGREEMENT PURPOSES DURING PREVIOUS SURVEY (20/24)

DETAIL 3" (NOT TO SCALE)

40.00' WIDE AS PER RD. BK. 1, PG. 507 AND RD. BK. 1, PG. 344.

40.00' WIDE AS PER RD. BK. 1, PG. 507 AND RD. BK. 1, PG. 344.

40.00' WIDE AS PER RD. BK. 1, PG. 507 AND RD. BK. 1, PG. 344.

40.00' WIDE AS PER RD. BK. 1, PG. 507 AND RD. BK. 1, PG. 344.

40.00' WIDE AS PER RD. BK. 1, PG. 507 AND RD. BK. 1, PG. 344.

40.00' WIDE AS PER RD. BK. 1, PG. 507 AND RD. BK. 1, PG. 344.

40.00' WIDE AS PER RD. BK. 1, PG. 507 AND RD. BK. 1, PG. 344.

40.00' WIDE AS PER RD. BK. 1, PG. 507 AND RD. BK. 1, PG. 344.

40.00' WIDE AS PER RD. BK. 1, PG. 507 AND RD. BK. 1, PG. 344.

40.00' WIDE AS PER RD. BK. 1, PG. 507 AND RD. BK. 1, PG. 344.

40.00' WIDE AS PER RD. BK. 1, PG. 507 AND RD. BK. 1, PG. 344.

40.00' WIDE AS PER RD. BK. 1, PG. 507 AND RD. BK. 1, PG. 344.

40.00' WIDE AS PER RD. BK. 1, PG. 507 AND RD. BK. 1, PG. 344.

40.00' WIDE AS PER RD. BK. 1, PG. 507 AND RD. BK. 1, PG. 344.

40.00' WIDE AS PER RD. BK. 1, PG. 507 AND RD. BK. 1, PG. 344.

40.00' WIDE AS PER RD. BK. 1, PG. 507 AND RD. BK. 1, PG. 344.

40.00' WIDE AS PER RD. BK. 1, PG. 507 AND RD. BK. 1, PG. 344.

40.00' WIDE AS PER RD. BK. 1, PG. 507 AND RD. BK. 1, PG. 344.

40.00' WIDE AS PER RD. BK. 1, PG. 507 AND RD. BK. 1, PG. 344.

40.00' WIDE AS PER RD. BK. 1, PG. 507 AND RD. BK. 1, PG. 344.

40.00' WIDE AS PER RD. BK. 1, PG. 507 AND RD. BK. 1, PG. 344.

40.00' WIDE AS PER RD. BK. 1, PG. 507 AND RD. BK. 1, PG. 344.

40.00' WIDE AS PER RD. BK. 1, PG. 507 AND RD. BK. 1, PG. 344.

40.00' WIDE AS PER RD. BK. 1, PG. 507 AND RD. BK. 1, PG. 344.

40.00' WIDE AS PER RD. BK. 1, PG. 507 AND RD. BK. 1, PG. 344.

40.00' WIDE AS PER RD. BK. 1, PG. 507 AND RD. BK. 1, PG. 344.

40.00' WIDE AS PER RD. BK. 1, PG. 507 AND RD. BK. 1, PG. 344.

40.00' WIDE AS PER RD. BK. 1, PG. 507 AND RD. BK. 1, PG. 344.

40.00' WIDE AS PER RD. BK. 1, PG. 507 AND RD. BK. 1, PG. 344.

NE 339th ST. COUNTY RD. NO. 41

NE 24th AVE. (BARTLETT ROAD)

CO. RD. NO. 42 (LOCKWOOD CREEK ROAD)

DEED NORTH 1963501

DEED SOUTH 1963501

DEED SOUTH 1963501

DEED SOUTH 1963501

DEED SOUTH 1963501

DEED SOUTH 1963501

DEED SOUTH 1963501

DEED SOUTH 1963501

DEED SOUTH 1963501

DEED SOUTH 1963501

DEED SOUTH 1963501

DEED SOUTH 1963501

DEED SOUTH 1963501

DEED SOUTH 1963501

DEED SOUTH 1963501

DEED SOUTH 1963501

DEED SOUTH 1963501

DEED SOUTH 1963501

DEED SOUTH 1963501

DEED SOUTH 1963501

DEED SOUTH 1963501

DEED SOUTH 1963501

DEED SOUTH 1963501

DEED SOUTH 1963501

DEED SOUTH 1963501

DEED SOUTH 1963501

DEED SOUTH 1963501

DEED SOUTH 1963501

IR IS IN FNC. LINE

IR IS IN FNC. LINE

IR IS IN FNC. LINE

IR IS IN FNC. LINE

IR IS IN FNC. LINE

IR IS IN FNC. LINE

IR IS IN FNC. LINE

IR IS IN FNC. LINE

IR IS IN FNC. LINE

IR IS IN FNC. LINE

IR IS IN FNC. LINE

IR IS IN FNC. LINE

IR IS IN FNC. LINE

IR IS IN FNC. LINE

IR IS IN FNC. LINE

IR IS IN FNC. LINE

IR IS IN FNC. LINE

IR IS IN FNC. LINE

IR IS IN FNC. LINE

IR IS IN FNC. LINE

IR IS IN FNC. LINE

IR IS IN FNC. LINE

IR IS IN FNC. LINE

IR IS IN FNC. LINE

IR IS IN FNC. LINE

IR IS IN FNC. LINE

IR IS IN FNC. LINE

IR IS IN FNC. LINE

IR IS IN FNC. LINE

IR IS IN FNC. LINE

IR IS IN FNC. LINE

IR IS IN FNC. LINE

IR IS IN FNC. LINE

IR IS IN FNC. LINE

IR IS IN FNC. LINE

IR IS IN FNC. LINE

IR IS IN FNC. LINE

IR IS IN FNC. LINE

IR IS IN FNC. LINE

IR IS IN FNC. LINE

IR IS IN FNC. LINE

IR IS IN FNC. LINE

IR IS IN FNC. LINE

IR IS IN FNC. LINE

IR IS IN FNC. LINE

IR IS IN FNC. LINE

IR IS IN FNC. LINE

IR IS IN FNC. LINE

IR IS IN FNC. LINE

IR IS IN FNC. LINE

IR IS IN FNC. LINE

IR IS IN FNC. LINE

IR IS IN FNC. LINE

IR IS IN FNC. LINE

IR IS IN FNC. LINE

IR IS IN FNC. LINE

IR IS IN FNC. LINE

IR IS IN FNC. LINE

IR IS IN FNC. LINE

IR IS IN FNC. LINE

IR IS IN FNC. LINE

IR IS IN FNC. LINE

IR IS IN FNC. LINE

IR IS IN FNC. LINE

IR IS IN FNC. LINE

IR IS IN FNC. LINE

IR IS IN FNC. LINE

IR IS IN FNC. LINE

IR IS IN FNC. LINE

IR IS IN FNC. LINE

IR IS IN FNC. LINE

IR IS IN FNC. LINE

IR IS IN FNC. LINE

IR IS IN FNC. LINE

IR IS IN FNC. LINE

IR IS IN FNC. LINE

IR IS IN FNC. LINE

IR IS IN FNC. LINE

IR IS IN FNC. LINE

IR IS IN FNC. LINE

IR IS IN FNC. LINE

IR IS IN FNC. LINE

IR IS IN FNC. LINE

IR IS IN FNC. LINE

IR IS IN FNC. LINE

IR IS IN FNC. LINE

IR IS IN FNC. LINE

IR IS IN FNC. LINE

IR IS IN FNC. LINE

IR IS IN FNC. LINE

IR IS IN FNC. LINE

IR IS IN FNC. LINE

IR IS IN FNC. LINE

IR IS IN FNC. LINE

IR IS IN FNC. LINE

IR IS IN FNC. LINE

IR IS IN FNC. LINE

IR IS IN FNC. LINE

IR IS IN FNC. LINE

IR IS IN FNC. LINE

IR IS IN FNC. LINE

IR IS IN FNC. LINE

IR IS IN FNC. LINE

IR IS IN FNC. LINE

IR IS IN FNC. LINE

IR IS IN FNC. LINE

IR IS IN FNC. LINE

IR IS IN FNC. LINE

IR IS IN FNC. LINE

IR IS IN FNC. LINE

IR IS IN FNC. LINE

IR IS IN FNC. LINE

IR IS IN FNC. LINE

IR IS IN FNC. LINE

IR IS IN FNC. LINE

IR IS IN FNC. LINE

IR IS IN FNC. LINE

IR IS IN FNC. LINE

IR IS IN FNC. LINE

IR IS IN FNC. LINE

IR IS IN FNC. LINE

IR IS IN FNC. LINE

IR IS IN FNC. LINE

IR IS IN FNC. LINE

IR IS IN FNC. LINE

IR IS IN FNC. LINE

IR IS IN FNC. LINE

IR IS IN FNC. LINE

IR IS IN FNC. LINE

IR IS IN FNC. LINE

IR IS IN FNC. LINE

IR IS IN FNC. LINE

IR IS IN FNC. LINE

IR IS IN FNC. LINE

IR IS IN FNC. LINE

IR IS IN FNC. LINE

IR IS IN FNC. LINE

IR IS IN FNC. LINE

IR IS IN FNC. LINE

IR IS IN FNC. LINE

IR IS IN FNC. LINE

IR IS IN FNC. LINE

IR IS IN FNC. LINE

IR IS IN FNC. LINE

IR IS IN FNC. LINE

IR IS IN FNC. LINE

IR IS IN FNC. LINE

IR IS IN FNC. LINE

IR IS IN FNC. LINE