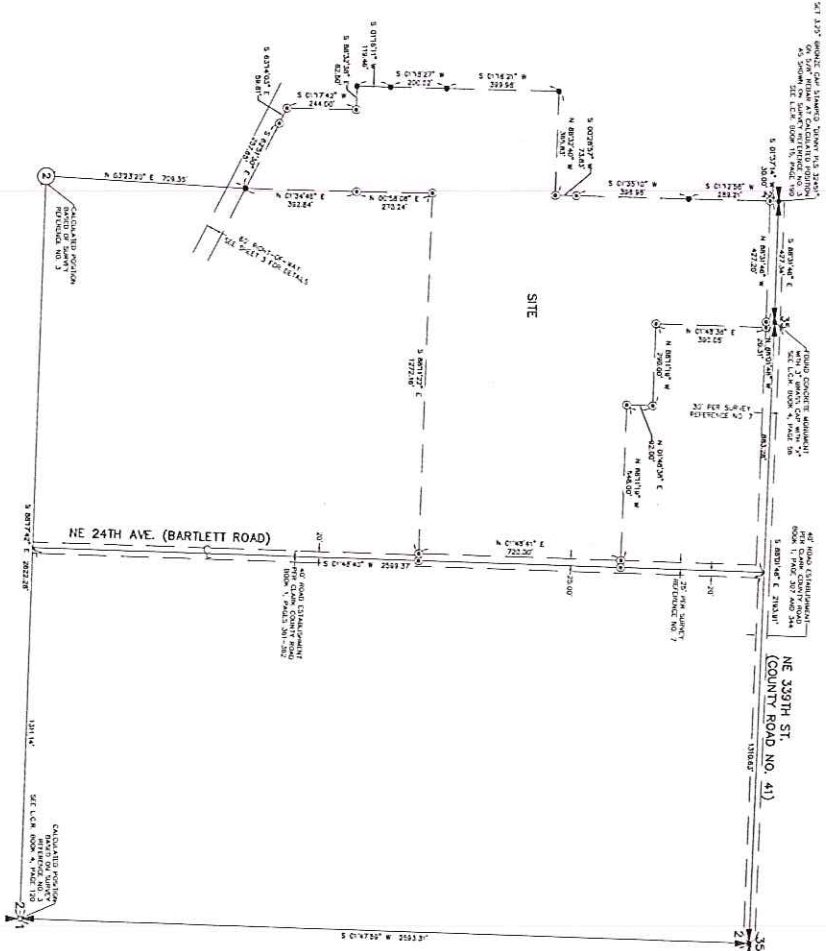


- SURVEY REFERENCES:**
- 1) 2008 SURVEY BOOK 45, PAGE 171
 - 2) 2008 SURVEY BOOK 45, PAGE 21
 - 3) 2008 SURVEY BOOK 45, PAGE 21
 - 4) 2008 SURVEY BOOK 45, PAGE 21
 - 5) 2008 SURVEY BOOK 45, PAGE 21
 - 6) 2008 SURVEY BOOK 45, PAGE 21
 - 7) 2008 SURVEY BOOK 45, PAGE 21
 - 8) 2008 SURVEY BOOK 45, PAGE 21
 - 9) 2008 SURVEY BOOK 45, PAGE 21
 - 10) 2008 SURVEY BOOK 45, PAGE 21
- DEED REFERENCES:**
- 1) 2008 DEED BOOK 1, PAGE 171
 - 2) 2008 DEED BOOK 1, PAGE 171
 - 3) 2008 DEED BOOK 1, PAGE 171
 - 4) 2008 DEED BOOK 1, PAGE 171
 - 5) 2008 DEED BOOK 1, PAGE 171
 - 6) 2008 DEED BOOK 1, PAGE 171
 - 7) 2008 DEED BOOK 1, PAGE 171
 - 8) 2008 DEED BOOK 1, PAGE 171
 - 9) 2008 DEED BOOK 1, PAGE 171
 - 10) 2008 DEED BOOK 1, PAGE 171

PLAT NOTES:

- 1) THE CITY SHALL ACCESS AND CHANGE THE ROAD-CURBLINE APPROXIMATELY 10' FROM THE EXISTING SIDEWALK TO THE CENTERLINE OF THE ROAD.
- 2) THE CITY SHALL ACCESS AND CHANGE THE ROAD-CURBLINE APPROXIMATELY 10' FROM THE EXISTING SIDEWALK TO THE CENTERLINE OF THE ROAD.
- 3) THE CITY SHALL ACCESS AND CHANGE THE ROAD-CURBLINE APPROXIMATELY 10' FROM THE EXISTING SIDEWALK TO THE CENTERLINE OF THE ROAD.
- 4) THE CITY SHALL ACCESS AND CHANGE THE ROAD-CURBLINE APPROXIMATELY 10' FROM THE EXISTING SIDEWALK TO THE CENTERLINE OF THE ROAD.
- 5) THE CITY SHALL ACCESS AND CHANGE THE ROAD-CURBLINE APPROXIMATELY 10' FROM THE EXISTING SIDEWALK TO THE CENTERLINE OF THE ROAD.
- 6) THE CITY SHALL ACCESS AND CHANGE THE ROAD-CURBLINE APPROXIMATELY 10' FROM THE EXISTING SIDEWALK TO THE CENTERLINE OF THE ROAD.
- 7) THE CITY SHALL ACCESS AND CHANGE THE ROAD-CURBLINE APPROXIMATELY 10' FROM THE EXISTING SIDEWALK TO THE CENTERLINE OF THE ROAD.
- 8) THE CITY SHALL ACCESS AND CHANGE THE ROAD-CURBLINE APPROXIMATELY 10' FROM THE EXISTING SIDEWALK TO THE CENTERLINE OF THE ROAD.
- 9) THE CITY SHALL ACCESS AND CHANGE THE ROAD-CURBLINE APPROXIMATELY 10' FROM THE EXISTING SIDEWALK TO THE CENTERLINE OF THE ROAD.
- 10) THE CITY SHALL ACCESS AND CHANGE THE ROAD-CURBLINE APPROXIMATELY 10' FROM THE EXISTING SIDEWALK TO THE CENTERLINE OF THE ROAD.

- UTILITY AND SIDEWALK EASEMENT:**
- AN EASEMENT IS HEREBY RESERVED UNDER AND UPON ALL TRACTS AND THE EXTERIOR 5% (5) FEET ON ALL BOUNDARY LINES OF THE LOT TRACTS FOR THE INSTALLATION, CONSTRUCTION, MAINTENANCE, OPERATION AND REPAIR OF ALL UTILITIES, INCLUDING TELEPHONE, TV, CABLE, WATER AND SEWER LINES, AND FOR THE INSTALLATION, CONSTRUCTION, MAINTENANCE AND REPAIR OF ALL SIDEWALKS AND DRIVEWAYS. THE EASEMENT SHALL BE DEEMED TO BE NECESSARY TO CARRY WITH ALL SUCH REQUIREMENTS, INCLUDING THE EXTERIOR 5% (5) FEET ALONG THE FRONT BOUNDARY LINE OF ALL LOTS AND THEREIN ADJACENT TO PUBLIC STREETS.



- LEGEND:**
- INDICATED EASEMENT FOUND AS NOTED
 - INDICATED LOT 2, 3, 4, 5, 6, 7, 8, 9, 10, 11, 12, 13, 14, 15, 16, 17, 18, 19, 20, 21, 22, 23, 24, 25, 26, 27, 28, 29, 30, 31, 32, 33, 34, 35, 36, 37, 38, 39, 40, 41, 42, 43, 44, 45, 46, 47, 48, 49, 50, 51, 52, 53, 54, 55, 56, 57, 58, 59, 60, 61, 62, 63, 64, 65, 66, 67, 68, 69, 70, 71, 72, 73, 74, 75, 76, 77, 78, 79, 80, 81, 82, 83, 84, 85, 86, 87, 88, 89, 90, 91, 92, 93, 94, 95, 96, 97, 98, 99, 100, 101, 102, 103, 104, 105, 106, 107, 108, 109, 110, 111, 112, 113, 114, 115, 116, 117, 118, 119, 120, 121, 122, 123, 124, 125, 126, 127, 128, 129, 130, 131, 132, 133, 134, 135, 136, 137, 138, 139, 140, 141, 142, 143, 144, 145, 146, 147, 148, 149, 150, 151, 152, 153, 154, 155, 156, 157, 158, 159, 160, 161, 162, 163, 164, 165, 166, 167, 168, 169, 170, 171, 172, 173, 174, 175, 176, 177, 178, 179, 180, 181, 182, 183, 184, 185, 186, 187, 188, 189, 190, 191, 192, 193, 194, 195, 196, 197, 198, 199, 200, 201, 202, 203, 204, 205, 206, 207, 208, 209, 210, 211, 212, 213, 214, 215, 216, 217, 218, 219, 220, 221, 222, 223, 224, 225, 226, 227, 228, 229, 230, 231, 232, 233, 234, 235, 236, 237, 238, 239, 240, 241, 242, 243, 244, 245, 246, 247, 248, 249, 250, 251, 252, 253, 254, 255, 256, 257, 258, 259, 260, 261, 262, 263, 264, 265, 266, 267, 268, 269, 270, 271, 272, 273, 274, 275, 276, 277, 278, 279, 280, 281, 282, 283, 284, 285, 286, 287, 288, 289, 290, 291, 292, 293, 294, 295, 296, 297, 298, 299, 300, 301, 302, 303, 304, 305, 306, 307, 308, 309, 310, 311, 312, 313, 314, 315, 316, 317, 318, 319, 320, 321, 322, 323, 324, 325, 326, 327, 328, 329, 330, 331, 332, 333, 334, 335, 336, 337, 338, 339, 340, 341, 342, 343, 344, 345, 346, 347, 348, 349, 350, 351, 352, 353, 354, 355, 356, 357, 358, 359, 360, 361, 362, 363, 364, 365, 366, 367, 368, 369, 370, 371, 372, 373, 374, 375, 376, 377, 378, 379, 380, 381, 382, 383, 384, 385, 386, 387, 388, 389, 390, 391, 392, 393, 394, 395, 396, 397, 398, 399, 400, 401, 402, 403, 404, 405, 406, 407, 408, 409, 410, 411, 412, 413, 414, 415, 416, 417, 418, 419, 420, 421, 422, 423, 424, 425, 426, 427, 428, 429, 430, 431, 432, 433, 434, 435, 436, 437, 438, 439, 440, 441, 442, 443, 444, 445, 446, 447, 448, 449, 450, 451, 452, 453, 454, 455, 456, 457, 458, 459, 460, 461, 462, 463, 464, 465, 466, 467, 468, 469, 470, 471, 472, 473, 474, 475, 476, 477, 478, 479, 480, 481, 482, 483, 484, 485, 486, 487, 488, 489, 490, 491, 492, 493, 494, 495, 496, 497, 498, 499, 500, 501, 502, 503, 504, 505, 506, 507, 508, 509, 510, 511, 512, 513, 514, 515, 516, 517, 518, 519, 520, 521, 522, 523, 524, 525, 526, 527, 528, 529, 530, 531, 532, 533, 534, 535, 536, 537, 538, 539, 540, 541, 542, 543, 544, 545, 546, 547, 548, 549, 550, 551, 552, 553, 554, 555, 556, 557, 558, 559, 560, 561, 562, 563, 564, 565, 566, 567, 568, 569, 570, 571, 572, 573, 574, 575, 576, 577, 578, 579, 580, 581, 582, 583, 584, 585, 586, 587, 588, 589, 590, 591, 592, 593, 594, 595, 596, 597, 598, 599, 600, 601, 602, 603, 604, 605, 606, 607, 608, 609, 610, 611, 612, 613, 614, 615, 616, 617, 618, 619, 620, 621, 622, 623, 624, 625, 626, 627, 628, 629, 630, 631, 632, 633, 634, 635, 636, 637, 638, 639, 640, 641, 642, 643, 644, 645, 646, 647, 648, 649, 650, 651, 652, 653, 654, 655, 656, 657, 658, 659, 660, 661, 662, 663, 664, 665, 666, 667, 668, 669, 670, 671, 672, 673, 674, 675, 676, 677, 678, 679, 680, 681, 682, 683, 684, 685, 686, 687, 688, 689, 690, 691, 692, 693, 694, 695, 696, 697, 698, 699, 700, 701, 702, 703, 704, 705, 706, 707, 708, 709, 710, 711, 712, 713, 714, 715, 716, 717, 718, 719, 720, 721, 722, 723, 724, 725, 726, 727, 728, 729, 730, 731, 732, 733, 734, 735, 736, 737, 738, 739, 740, 741, 742, 743, 744, 745, 746, 747, 748, 749, 750, 751, 752, 753, 754, 755, 756, 757, 758, 759, 760, 761, 762, 763, 764, 765, 766, 767, 768, 769, 770, 771, 772, 773, 774, 775, 776, 777, 778, 779, 780, 781, 782, 783, 784, 785, 786, 787, 788, 789, 790, 791, 792, 793, 794, 795, 796, 797, 798, 799, 800, 801, 802, 803, 804, 805, 806, 807, 808, 809, 810, 811, 812, 813, 814, 815, 816, 817, 818, 819, 820, 821, 822, 823, 824, 825, 826, 827, 828, 829, 830, 831, 832, 833, 834, 835, 836, 837, 838, 839, 840, 841, 842, 843, 844, 845, 846, 847, 848, 849, 850, 851, 852, 853, 854, 855, 856, 857, 858, 859, 860, 861, 862, 863, 864, 865, 866, 867, 868, 869, 870, 871, 872, 873, 874, 875, 876, 877, 878, 879, 880, 881, 882, 883, 884, 885, 886, 887, 888, 889, 890, 891, 892, 893, 894, 895, 896, 897, 898, 899, 900, 901, 902, 903, 904, 905, 906, 907, 908, 909, 910, 911, 912, 913, 914, 915, 916, 917, 918, 919, 920, 921, 922, 923, 924, 925, 926, 927, 928, 929, 930, 931, 932, 933, 934, 935, 936, 937, 938, 939, 940, 941, 942, 943, 944, 945, 946, 947, 948, 949, 950, 951, 952, 953, 954, 955, 956, 957, 958, 959, 960, 961, 962, 963, 964, 965, 966, 967, 968, 969, 970, 971, 972, 973, 974, 975, 976, 977, 978, 979, 980, 981, 982, 983, 984, 985, 986, 987, 988, 989, 990, 991, 992, 993, 994, 995, 996, 997, 998, 999, 1000
 - INDICATED TIE LINE
 - INDICATED CALCULATED POINT

HERITAGE COUNTRY ESTATES
 PRELIMINARILY APPROVED AS
 SUNRISE TERRACE
 A SUBDIVISION IN LOT 2 AND 3 AND A
 PORTION OF LOT 1 OF PERROTT SHORT PLAT,
 RECORDED IN BOOK 3 OF SHORT PLATS
 AT PAGE 905, BEING IN A PORTION OF
 THE NE 1/4 AND ALSO A PORTION OF THE NW 1/4
 OF SECTION 2,
 T. 4 N., R. 1 E., W.M.,
 CITY OF LA CENTER,
 CLARK COUNTY, WASHINGTON
 SHEET 1 OF 3

LA CENTER MAYOR:
 APPROVED BY: *[Signature]* DATE: 3-24-18

LA CENTER DIRECTOR OF PUBLIC WORKS:
 APPROVED BY: *[Signature]* DATE: 3/24/18

CITY ENGINEER:
 APPROVED BY: *[Signature]* DATE: 3/24/18

LA CENTER FINANCE DIRECTOR / CITY CLERK:
 APPROVED BY: *[Signature]* DATE: 3/24/18

CLARK PUBLIC UTILITIES:
 APPROVED BY: *[Signature]* DATE: 3/24/18

THIS PLAT MEETS THE REQUIREMENTS FOR CLARK PUBLIC UTILITIES FOR WATER SERVICE.
 APPROVED BY: *[Signature]* DATE: 3/24/18

AUDITOR'S CERTIFICATE:
 FIELD FOR RECORD THIS: 21 DAY OF March 2018
 IN BOOK: 311 AT PAGE 222
 AT THE CLERK'S OFFICE OF THE CLERK OF THE SUPERIOR COURT
 IN THE CITY AND COUNTY OF CLARK, WASHINGTON
 CLERK COUNTY ASSESSOR: *[Signature]* DATE: 3/24/18

CLARK COUNTY ASSESSOR:
 THIS PLAT MEETS THE REQUIREMENTS FOR THE CITY AND COUNTY OF CLARK, WASHINGTON.
 PLAT NO. 2025372 HERITAGE COUNTRY ESTATES
 CLARK COUNTY, WASHINGTON
 DATE: 3/24/18

SURVEYOR'S CERTIFICATE:
 I HEREBY CERTIFY THAT THIS PLAT AS SHOWN IS A TRUE RETURN FROM THE FIELD AND
 THAT THE SURVEYOR HAS BEEN DULY QUALIFIED AND IS A MEMBER OF THE SOCIETY OF
 PROFESSIONAL SURVEYORS.
 SURVEYOR: *[Signature]* DATE: 3/24/18

CLARK COUNTY ENGINEER
 CLARK COUNTY, WASHINGTON
 DATE: 3/24/18

MINISTER-GAISER SURVEYING INC.
 2000 UNIVERSITY AVENUE
 SUITE 100
 CLARK COUNTY, WASHINGTON 98502
 (509) 684-5313
 FAX: 1113181818

JOB NO. 22-114
 DATE: 02-28-18
 DRAWN BY: JDL
 CHECKED BY: LD

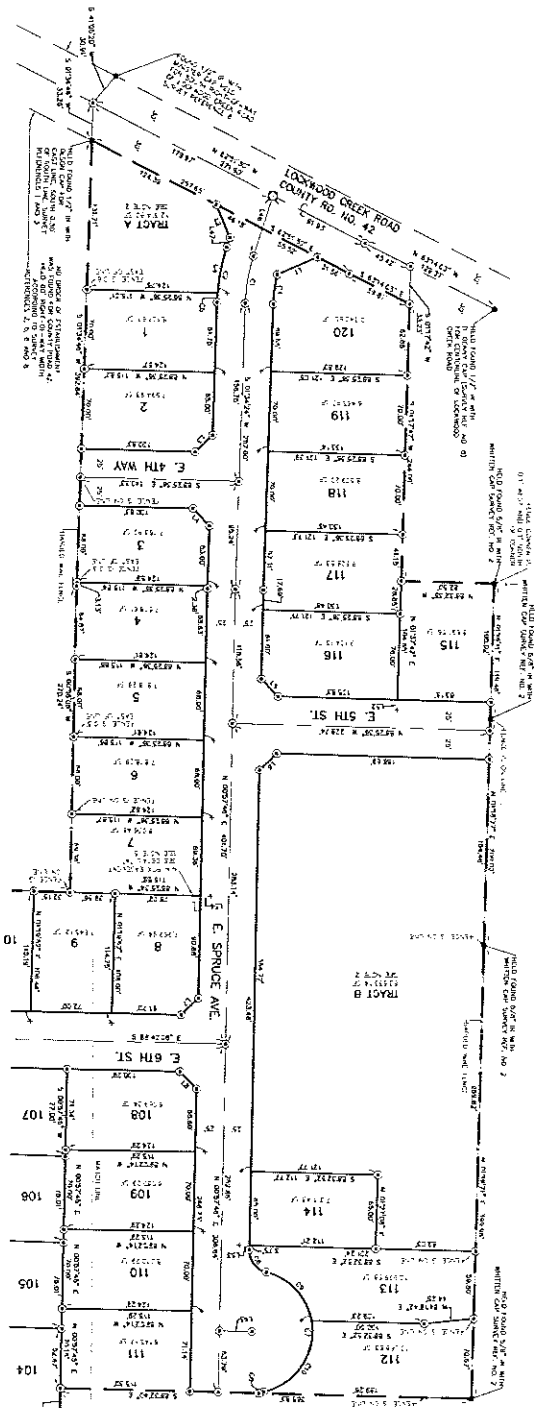
SCALE 1" = 200 FEET

200 100 0 100 200 300 400

RECEIVED
 24 FEB 2018
 CITY OF LA CENTER

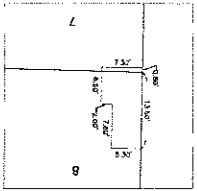
HERITAGE COUNTRY ESTATES

PRELIMINARILY APPROVED AS
 SUNRISE TERRACE
 A SUBDIVISION IN LOT 2 AND 3 AND A
 PORTION OF LOT 1 OF PERROTT SHORT PLAT
 RECORDED IN BOOK 3 OF SHORT PLATS
 AT PAGE 905, BEING IN A PORTION OF
 THE NE 1/4 AND ALSO A PORTION OF THE NW 1/4
 OF SECTION 2,
 T. 4 N., R. 1 E., W.M.,
 CITY OF LA CENTER,
 CLARK COUNTY, WASHINGTON
 SHEET 2 OF 3



LEGEND:

- ADJACENT UNIMPROVED LAND AS SHOWN
- ADJACENT LOT 1 OF "SUNRISE TERRACE"
- ADJACENT LOT 2 OF "SUNRISE TERRACE"
- ADJACENT LOT 3 OF "SUNRISE TERRACE"
- ADJACENT LOT 4 OF "SUNRISE TERRACE"
- ADJACENT LOT 5 OF "SUNRISE TERRACE"
- ADJACENT LOT 6 OF "SUNRISE TERRACE"
- ADJACENT LOT 7 OF "SUNRISE TERRACE"
- ADJACENT LOT 8 OF "SUNRISE TERRACE"
- ADJACENT LOT 9 OF "SUNRISE TERRACE"
- ADJACENT LOT 10 OF "SUNRISE TERRACE"
- ADJACENT LOT 11 OF "SUNRISE TERRACE"
- ADJACENT LOT 12 OF "SUNRISE TERRACE"
- ADJACENT LOT 13 OF "SUNRISE TERRACE"
- ADJACENT LOT 14 OF "SUNRISE TERRACE"
- ADJACENT LOT 15 OF "SUNRISE TERRACE"
- ADJACENT LOT 16 OF "SUNRISE TERRACE"
- ADJACENT LOT 17 OF "SUNRISE TERRACE"
- ADJACENT LOT 18 OF "SUNRISE TERRACE"
- ADJACENT LOT 19 OF "SUNRISE TERRACE"
- ADJACENT LOT 20 OF "SUNRISE TERRACE"



NOTES:
 1. ALL LINES ARE PARALLEL OR PERPENDICULAR TO THE EAST-WEST OR NORTH-SOUTH LINE, UNLESS OTHERWISE NOTED.
 2. SEE SHEET 1 OF THIS PLAT FOR THE "SUNRISE TERRACE" SUBDIVISION.

LINE	BEARING	DISTANCE
101	S 89° 57' 27" E	24.17'
102	S 89° 57' 27" E	24.17'
103	S 89° 57' 27" E	24.17'
104	S 89° 57' 27" E	24.17'
105	S 89° 57' 27" E	24.17'
106	S 89° 57' 27" E	24.17'
107	S 89° 57' 27" E	24.17'
108	S 89° 57' 27" E	24.17'
109	S 89° 57' 27" E	24.17'
110	S 89° 57' 27" E	24.17'
111	S 89° 57' 27" E	24.17'
112	S 89° 57' 27" E	24.17'
113	S 89° 57' 27" E	24.17'
114	S 89° 57' 27" E	24.17'
115	S 89° 57' 27" E	24.17'
116	S 89° 57' 27" E	24.17'
117	S 89° 57' 27" E	24.17'
118	S 89° 57' 27" E	24.17'
119	S 89° 57' 27" E	24.17'
120	S 89° 57' 27" E	24.17'

LINE	BEARING	DISTANCE
121	S 89° 57' 27" E	24.17'
122	S 89° 57' 27" E	24.17'
123	S 89° 57' 27" E	24.17'
124	S 89° 57' 27" E	24.17'
125	S 89° 57' 27" E	24.17'
126	S 89° 57' 27" E	24.17'
127	S 89° 57' 27" E	24.17'
128	S 89° 57' 27" E	24.17'
129	S 89° 57' 27" E	24.17'
130	S 89° 57' 27" E	24.17'
131	S 89° 57' 27" E	24.17'
132	S 89° 57' 27" E	24.17'
133	S 89° 57' 27" E	24.17'
134	S 89° 57' 27" E	24.17'
135	S 89° 57' 27" E	24.17'
136	S 89° 57' 27" E	24.17'
137	S 89° 57' 27" E	24.17'
138	S 89° 57' 27" E	24.17'
139	S 89° 57' 27" E	24.17'
140	S 89° 57' 27" E	24.17'

LINE	BEARING	DISTANCE
141	S 89° 57' 27" E	24.17'
142	S 89° 57' 27" E	24.17'
143	S 89° 57' 27" E	24.17'
144	S 89° 57' 27" E	24.17'
145	S 89° 57' 27" E	24.17'
146	S 89° 57' 27" E	24.17'
147	S 89° 57' 27" E	24.17'
148	S 89° 57' 27" E	24.17'
149	S 89° 57' 27" E	24.17'
150	S 89° 57' 27" E	24.17'
151	S 89° 57' 27" E	24.17'
152	S 89° 57' 27" E	24.17'
153	S 89° 57' 27" E	24.17'
154	S 89° 57' 27" E	24.17'
155	S 89° 57' 27" E	24.17'
156	S 89° 57' 27" E	24.17'
157	S 89° 57' 27" E	24.17'
158	S 89° 57' 27" E	24.17'
159	S 89° 57' 27" E	24.17'
160	S 89° 57' 27" E	24.17'

LINE	BEARING	DISTANCE
161	S 89° 57' 27" E	24.17'
162	S 89° 57' 27" E	24.17'
163	S 89° 57' 27" E	24.17'
164	S 89° 57' 27" E	24.17'
165	S 89° 57' 27" E	24.17'
166	S 89° 57' 27" E	24.17'
167	S 89° 57' 27" E	24.17'
168	S 89° 57' 27" E	24.17'
169	S 89° 57' 27" E	24.17'
170	S 89° 57' 27" E	24.17'
171	S 89° 57' 27" E	24.17'
172	S 89° 57' 27" E	24.17'
173	S 89° 57' 27" E	24.17'
174	S 89° 57' 27" E	24.17'
175	S 89° 57' 27" E	24.17'
176	S 89° 57' 27" E	24.17'
177	S 89° 57' 27" E	24.17'
178	S 89° 57' 27" E	24.17'
179	S 89° 57' 27" E	24.17'
180	S 89° 57' 27" E	24.17'

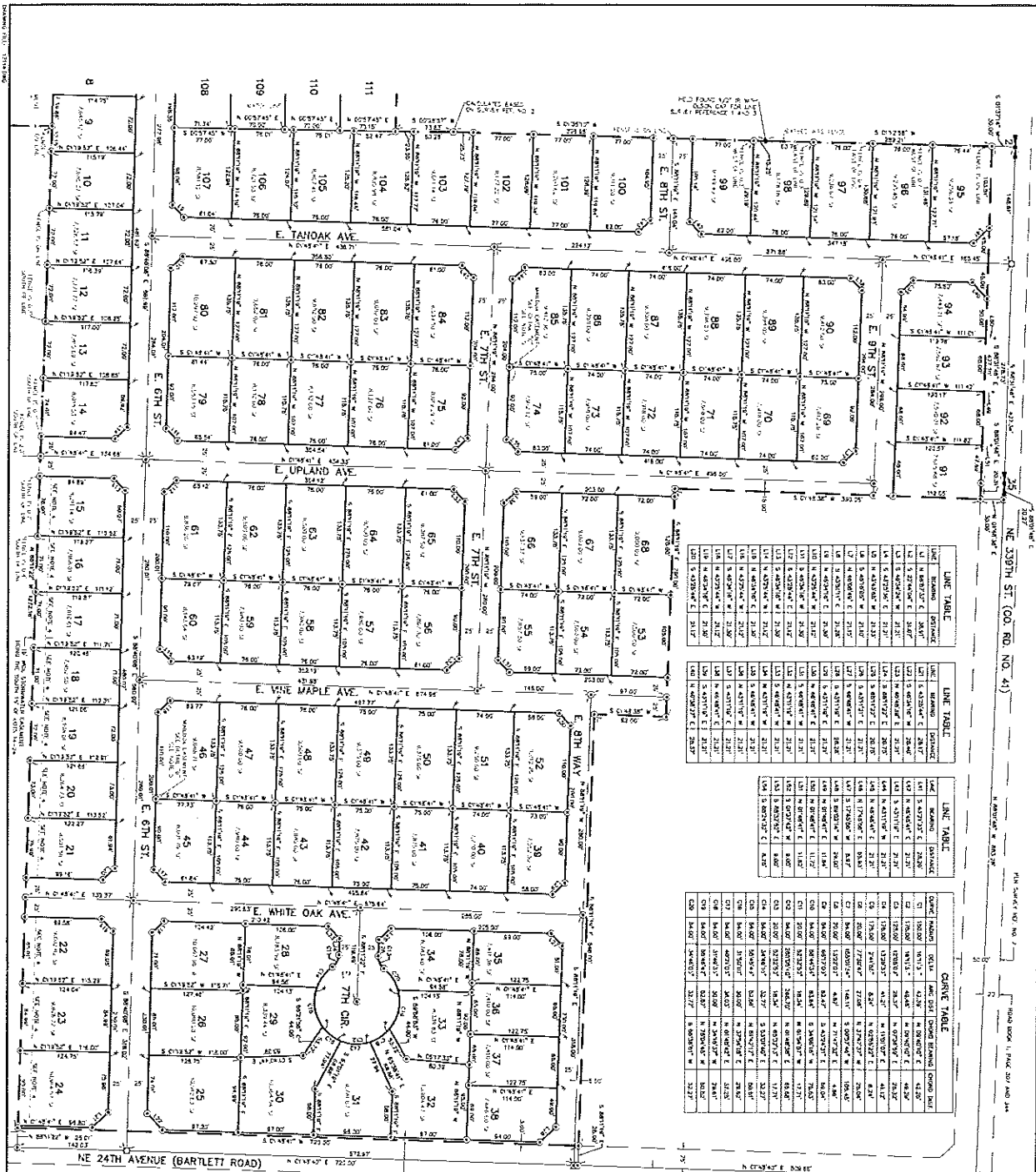
MINSTER-CLARKE SURVEYING INC.
 2000 W. 10th St.
 Vancouver, WA 98683
 (360) 684-3333

SCALE 1"=50'
 JOB NO. 12-06
 DATE: 05-20-08
 DRAWN BY: JLB
 CHECKED BY: JLB
 SHEET 2 OF 3

HERITAGE COUNTRY ESTATES

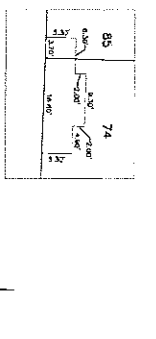
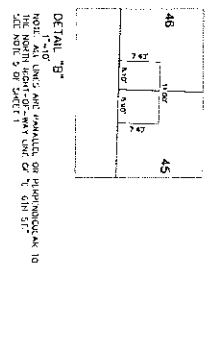
PRELIMINARILY APPROVED AS
 SUNRISE TERRACE
 A SUBDIVISION IN LOT 2 AND 3 AND A
 PORTION OF LOT 1 OF BERROTT SHORT PLAT,
 RECORDED IN BOOK 3 OF SHORT PLATS
 AT PAGE 905, BEING IN A PORTION OF
 THE NE 1/4 AND ALSO A PORTION OF THE NW 1/4
 OF SECTION 2,
 T. 4 N., R. 1 E., WM.
 CITY OF LA CENTER,
 CLARK COUNTY, WASHINGTON
 SHEET 3 OF 3

LINE TABLE	LINE TABLE	LINE TABLE	CHUTE TABLE
LINE NO. 1 100' x 100' x 100' x 100'	LINE NO. 2 100' x 100' x 100' x 100'	LINE NO. 3 100' x 100' x 100' x 100'	CHUTE NO. 1 100' x 100' x 100' x 100'



LEGEND:

- RECORDED PLATS
- (DASHED) LOT 21
- (DASHED) LOT 22
- (DASHED) LOT 23
- (DASHED) LOT 24
- (DASHED) LOT 25
- (DASHED) LOT 26
- (DASHED) LOT 27
- (DASHED) LOT 28
- (DASHED) LOT 29
- (DASHED) LOT 30
- (DASHED) LOT 31
- (DASHED) LOT 32
- (DASHED) LOT 33
- (DASHED) LOT 34
- (DASHED) LOT 35
- (DASHED) LOT 36
- (DASHED) LOT 37
- (DASHED) LOT 38
- (DASHED) LOT 39
- (DASHED) LOT 40
- (DASHED) LOT 41
- (DASHED) LOT 42
- (DASHED) LOT 43
- (DASHED) LOT 44
- (DASHED) LOT 45
- (DASHED) LOT 46
- (DASHED) LOT 47
- (DASHED) LOT 48
- (DASHED) LOT 49
- (DASHED) LOT 50
- (DASHED) LOT 51
- (DASHED) LOT 52
- (DASHED) LOT 53
- (DASHED) LOT 54
- (DASHED) LOT 55
- (DASHED) LOT 56
- (DASHED) LOT 57
- (DASHED) LOT 58



DETAIL "C"

NOTE: ALL LINES ARE PARALLEL OR PERPENDICULAR TO THE NORTH-SOUTH-LINE UNLESS OTHERWISE NOTED.

SCALE: 1" = 80 FEET

MINISTER-CLARKE SURVEYING INC.
 2200 N. COLUMBIA BLVD.
 COLUMBIA, WA 98541
 PHONE: 360-343-3315

DATE: 12/14/11
 DRAWN BY: JLM
 CHECKED BY: JLM
 SHEET 3 OF 3