

KAY'S SUBDIVISION PHASE 2

A REPLAT OF TRACT "C" OF KAY'S
SUBDIVISION PHASE 1 (311-960) IN A PORTION
OF THE NW 1/4 OF THE NW 1/4 AND THE NE
1/4 OF THE NW 1/4 OF SECTION 3
IN A PORTION OF GOVERNMENT LOTS 3 AND 4
IN A PORTION OF THE JOHN TIMMONS AND THE
A. BREZEE D.L.C.
T. 4 N., R 1 E., W. M.,
CITY OF LA CENTER
CLARK COUNTY, WASHINGTON
SHEET 2 OF 2

SURVEY REFERENCES:

- 1) MINISTER SURVEY BOOK 25 PAGE 131
- 2) RASMUSSEN ADDITION TO LACENTER VOLUME C PAGE 31
- 3) HART SURVEY BOOK 36 PAGE 30
- 4) PETTUOHN UNRECORDED SURVEY BOOK CC PAGE 080
- 5) KAY'S SUBDIVISION PHASE 1 BOOK 311 PAGE 960

LEGEND:

- INDICATES MONUMENT FOUND AS NOTED
- ⊙ INDICATES 1/2" x 24" REBAR WITH YELLOW PLASTIC CAP INSCRIBED "D.DENNY 35477", SET
- + INDICATES ROCK NAIL WITH BRASS WASHER INSCRIBED "35477" SET AT THE EXTENSION OF LOT LINE IN THE CURB FOR THE PURPOSE OF WITNESS CORNER
- ⊠ INDICATES FOUND 1/2" REBAR WITH YELLOW PLASTIC CAP INSCRIBED "D.DENNY 35477", HELD PER KAY'S SUBDIVISION PHASE 1 311-960
- INDICATES CALCULATED POSITION NOTHING SET
- () INDICATES DEED DISTANCE PER AF NO. 4051768 UNLESS OTHER WISE NOTED
- SF INDICATES SQUARE FEET

CURVE TABLE

CURVE	RADIUS	DELTA	ARC DIST.	CHORD BEARING	CHORD DIST.
C1	28.00'	90°00'00"	43.98'	S 46°28'17" W	39.60'
C2	16.00'	90°00'00"	25.13'	S 43°31'43" E	22.63'
C3	75.00'	39°46'43"	52.07'	N 68°38'22" W	51.03'
C4	75.00'	17°38'25"	23.09'	N 39°55'48" W	23.00'
C5	75.00'	16°43'52"	21.90'	N 22°44'39" W	21.82'
C6	100.00'	39°07'41"	68.29'	N 05°11'08" E	66.97'
C7	16.00'	66°40'50"	18.62'	S 08°35'27" E	17.59'
C8	40.00'	57°02'38"	39.82'	N 13°24'33" W	38.20'
C9	40.00'	52°58'35"	36.98'	N 41°36'04" E	35.68'
C10	28.00'	90°00'00"	43.98'	N 43°31'43" W	39.60'
C11	16.00'	90°00'00"	25.13'	N 46°28'17" E	22.63'
C12	16.00'	90°20'23"	25.23'	S 46°18'06" W	22.69'
C13	25.00'	74°09'00"	32.35'	N 51°27'13" W	30.14'
C14	50.00'	105°51'01"	92.37'	N 38°32'47" E	79.78'
C15	50.00'	23°07'29"	20.18'	S 76°57'59" E	20.04'
C16	104.00'	14°43'45"	26.74'	N 70°31'48" W	26.66'
C17	16.00'	79°01'34"	22.07'	S 38°22'53" E	20.36'
C18	40.00'	80°47'29"	56.40'	S 71°30'54" E	51.84'
C19	16.00'	66°40'50"	18.62'	N 64°27'35" W	17.59'
C20	100.00'	9°16'16"	16.18'	N 86°50'09" E	16.16'

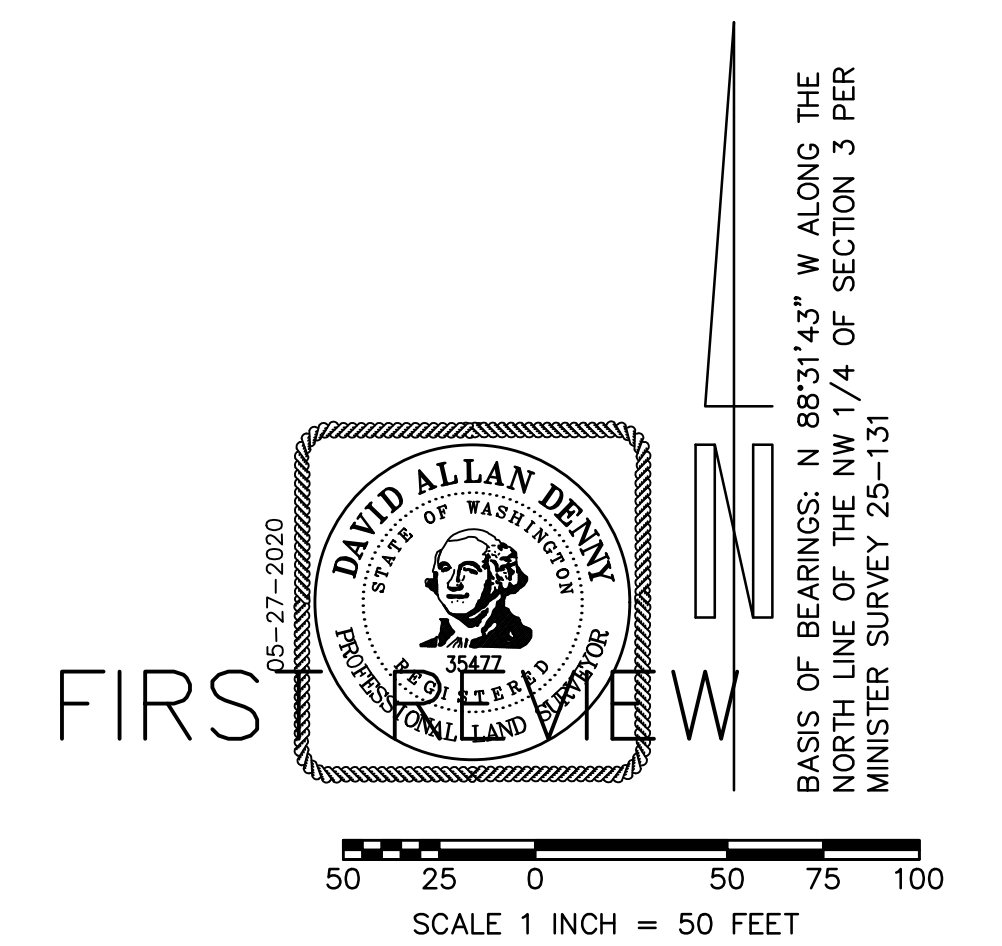
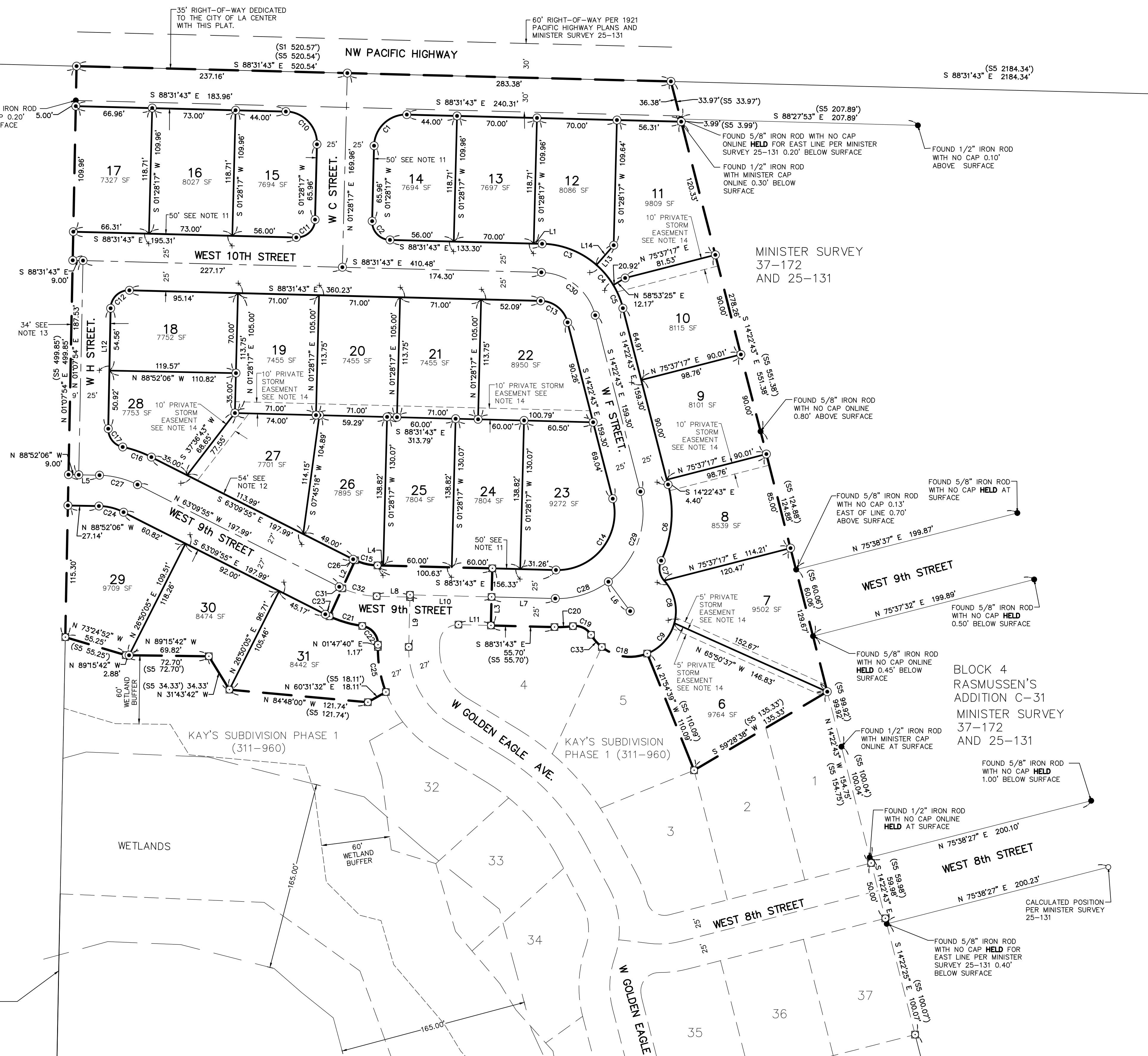
CURVE TABLE

CURVE	RADIUS	DELTA	ARC DIST.	CHORD BEARING	CHORD DIST.
C21	104.00'	16°31'24"	29.99'	S 73°39'56" E	29.89'
C22	16.00'	84°02'41"	23.47'	N 39°54'18" W	21.42'
C23	104.00'	2°14'19"	4.06'	S 64°17'05" E	4.06'
C24	50.00'	25°42'11"	22.43'	N 76°01'01" W	22.24'
C25	104.00'	22°39'11"	41.12'	S 09°51'18" E	40.85'
C26	50.00'	2°14'19"	1.95'	S 64°17'05" E	1.95'
C27	77.00'	25°42'11"	34.54'	N 76°01'01" W	34.25'
C28	75.00'	37°59'48"	49.74'	N 72°28'23" E	48.83'
C29	75.00'	67°51'12"	88.82'	N 19°32'53" E	83.72'
C30	50.00'	74°09'00"	64.71'	N 51°27'13" W	60.29'
C31	77.00'	2°14'19"	3.01'	S 64°17'05" E	3.01'
C32	77.00'	23°07'29"	31.08'	S 76°57'59" E	30.87'
C33	40.00'	20°29'20"	14.30'	S 41°21'50" E	14.23'

LINE TABLE

LINE	BEARING	DISTANCE
L1	S 88°31'43" E	7.30'
L2	S 24°35'46" W	54.00'
L3	S 01°28'17" W	50.00'
L4	N 88°31'43" W	5.08'
L5	N 88°52'06" W	27.16'
L6	N 36°31'31" W	32.00'
L7	N 88°31'43" W	55.70'
L8	S 88°31'43" E	29.20'
L9	N 01°28'17" E	45.56'
L10	S 88°31'43" E	71.44'
L11	S 88°31'43" E	28.44'
L12	S 01°07'54" W	105.48'
L13	S 41°15'00" W	31.75'
L14	S 41°15'00" W	23.00'

CALCULATED EAST LINE OF
MINISTER SURVEY 25-131 AND
DEED AUDITORS FILE NO. 5258686



MINISTER AND GLAESER SURVEYING, INC. MAKES NO WARRANTIES AS TO MATTERS OF UNWRITTEN TITLE SUCH AS ADVERSE POSSESSION, ACQUIESCENCE, ESTOPPLE, ETC.
A FIELD TRAVERSE WAS PERFORMED USING A FIVE SECOND TOTAL STATION. THE FIELD TRAVERSE MET THE MINIMUM STANDARDS FOR SURVEYS AS DESIGNATED IN WAC 332-130-090. ALL CORNERS NOTED AS FOUND WERE VISITED ON 5-18-20

MINISTER-GLAESER SURVEYING INC.
2200 E. EVERGREEN BLVD.
VANCOUVER, WA 98661
(360) 694-3313

JOB NO. 20-173
DATE: 05-27-20
CALC BY: DAD
DRAWN BY: AAD
CHECKED BY: DAD
FILE: 20173.DWG